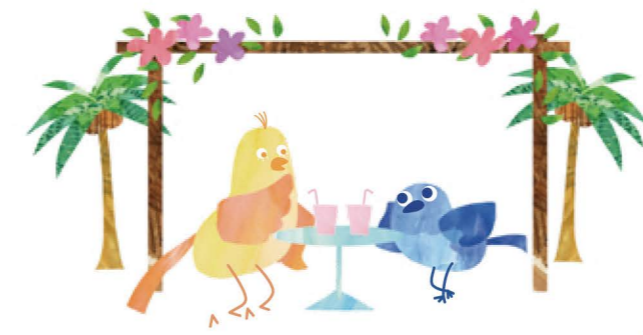


Naha Walking Tour

Yukuidokoro Historical Path

Oh! So 'Yukuidokoro' is
the Okinawan word for 'rest spot'.
'A place where you can sit back and relax.'



Historical Path Development Project

'Naha City is dedicated to sharing the rich history, heritage sites, and local charm of Okinawa's capital through initiatives such as the 'Naha Historical Sites and Landmarks Branding Project' and the 'Historical Walking Map Series.'
In recent years, there has been a growing momentum toward the restoration and preservation of historic landmarks across the city, including the iconic Shurijo Castle. Through the Historical Walking Path Development Project, we have enhanced public roadways to create an attractive, uniquely Okinawan atmosphere for tourism and urban development. By improving road surfaces and implementing greening and beautification initiatives, we have established inviting historical walking paths that encourage visitors to explore the city.'

Historical Path Development Project Locations



5 Tsuboya Yachimun (Pottery) St. Entrance Plaza ~The Tsuboya~
Situated at the gateway to Tsuboya Yachimun Street, this space was developed to serve as a symbolic landmark for the district, using local materials to capture the unique atmosphere of Tsuboya, the home of Yachimun pottery.



6 Orokubaba (Oroku Horse Field Site) Plaza ~Baba Horse Track Entrance Plaza in Oroku~
Leading to the historic site of the former Oroku village 'Baba' horse track, this space invites visitors to experience the rich heritage and culture of the area through interaction with the local community.



7 Sakurazaka Plaza ~The Ippuku 'Rest Spot' Plaza at Sakurazaka~
Nestled in the heart of the bustling Sakurazaka district, home to popular nightlife tours and endless local bars, this space was developed as an oasis to refresh and catch your breath from the vibrant energy of Sakurazaka at night.



8 Tsuboya Yachimun (Pottery) St. Plaza ~Yachimun-no Nakayukui 'Rest Spot'~
With its beautiful cobblestone paths and traditional architecture, this area offers a timeless streetscape in a unique and charming atmosphere. This 'Nakayukui' rest stop invites visitors exploring the Yachimun pottery district to enjoy a break while engaging in meaningful interaction with the local community.



9 Wakasa Plaza ~Kuninda-no Nakayukui 'Rest Spot'~
Surrounded by historic landmarks like Fukushuen Garden and Naminouegu Shrine, this plaza is ideally located along popular guided walking routes and serves as a cultural hub. It was developed to foster interaction between locals visiting nearby Matsuyama Park and travelers visiting Okinawa from around the world.

This leaflet introduces "Exchange Oasis Plazas" and "Historical Paths" serving as hubs for relaxation and interaction for visitors to Naha, aiming toward urban development befitting a "Subtropical Garden City." We have established the nine Exchange Oasis locations shown on this map to provide residents and visitors alike with dedicated spaces for rest and interaction.

Road Construction Division, Urban Future Department, Naha City



1 Nishimui Park ~Creation of a Nishimui Atmosphere, the Center for Artistic Expression~
The birthplace of post-war artistic restoration. Inheriting the local spirit by exhibiting artworks from that era. Developed as a space with high visibility from the monorail.



2 Ryutan Plaza ~Ryutan (Pond) Waterfront Plaza~
A location facing the waterfront where water flows down into Ryutan (Pond) from the Sui Mui forest of Shurijo Castle. Developed as an open space where local elementary school children and touring visitors can enjoy a safe and comfortable environment to rest.

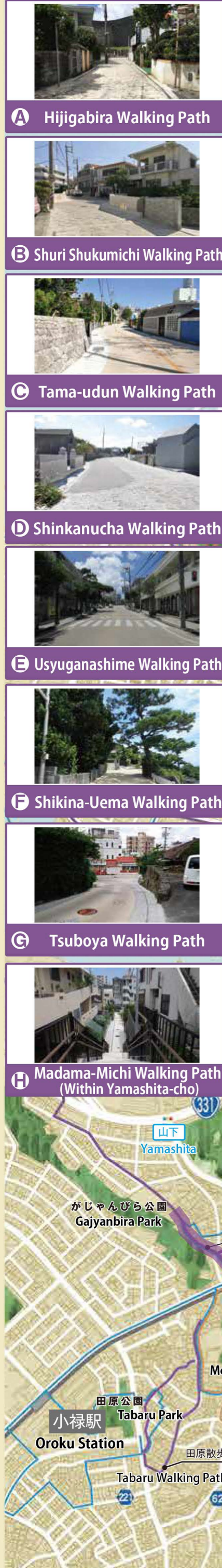


3 Shuri Kinjo-cho Stone-Paved Road Plaza ~A Nakayukui 'Rest Spot' Along the Ancient Path~
A rest area located along the historic Madama-Michi, a major road that connected Shurijo Castle to the port, on the way down the steep slope from Shuri to Shikina. Developed as a peaceful space where people can rest and cool off while strolling the area.



4 Sogenji Bridge Plaza ~A Waterfront Town Naa (Garden)~
Located at the foot of Sogenji-bashi Bridge facing the Asato River, this site has high accessibility to the water. Developed as a plaza that is highly visible from the monorail and harmonizes with cultural heritage sites such as the Sogenji Stone Gate in the heart of the city.

Naha Walking Tour



A Hijigabira Walking Path

B Shuri Shukumichi Walking Path

C Tama-udun Walking Path

D Shinkanucha Walking Path

E Usyuganashime Walking Path

F Shikina-Uema Walking Path

G Tsuboya Walking Path

H Madama-Michi Walking Path (Within Yamashita-cho)



Interaction Oasis Project Development Locations 1 ~ 9

Historical Paths Development Locations A ~ H

Naha Machimaai Tours

Naha City Machikado Guide

- 1** Nishimui Park
- 2** Ryutan (Pond) Plaza
- 3** Shuri Kinjo-cho Stone-Paved Road Plaza
- 4** Sogenji Bridge Plaza
- 5** Tsuboya Yachimun Street Entrance Plaza
- 6** Oroku Baba Entrance Plaza
- 7** Sakurazaka Plaza
- 8** Tsuboya Yachimun Street Plaza
- 9** Wakasa Plaza



When you touch both the giant Ufu Shisa, the guardian lion-dogs at Tsuboya and Saion...



Madama-Michi Walking Path
真珠道散歩道
Naha Machimaai Tour

Following our theme of 'strolling through the neighborhoods of Naha with a guide,' our tour guides, who are well-versed in the history and culture of Naha, will lead you on a fun-filled walking tour, peppered with interesting local episodes.

Naha Machimaai Office, Naha City Tourism Association
TEL : 098-860-5780 (9 : 00~17 : 00) URL: <https://book.naha-navi.or.jp>

Our Naha City Machikado guides warmly welcome all visitors to Okinawa and offer friendly, heartwarming tours, sharing the charms of the districts and their residents in the communities where we were raised.

NPO Naha City Machikado Guide TEL : 098-860-5960
URL: <http://www.naha-machikado-guide.com>